

Uni Apart Neu-Ulm

Memminger Str. 33-37



Building from outside



Memminger Str.
33-37
89231 Neu-Ulm
Deutschland

Real credits. The furniture.

The Apartments.

260 ready furnished apartments with an average size of 24sqm. The underground car park provides 105 parking spaces for motor vehicles.

The Community Areas.

To meet others, relax and communicate: Uni Apart Lounge and Bar, two seminar rooms in each building, Fitnessstudio, Wash- and Drying Rooms as well as Lobby und Garden-Campus.

The House.

The whole apartment building includes a well thought-out energy-saving-concept into the minutest details such as energy-efficient-lamps, etc. for more details please contact us. The on the ground administration answers all your questions and coordinates maintenance and repair.

[Energieausweis: Uni Apart Memminger Str. 33 Neu Ulm \(pdf\)](#)

[Energieausweis: Uni Apart Memminger Str. 35 Neu Ulm \(pdf\)](#)

[Energieausweis: Uni Apart Memminger Str. 37 Neu Ulm \(pdf\)](#)

The Residents.

Our apartments are exclusive for students, interns, doctoral candidates, trainees and apprentices. This arrangement provides a strong community and a real student life.

The Location.

The Apartment houses are located at the Allgäuer Ring next to the Glacis Park in the middle of Neu-Ulm, Memminger Straße corner Ringstraße. The distance to the university, Petrusplatz and the ratiopharm arena is only a few hundred metres away, the train station is only 300 metres away. Directly in front of the houses on the Memminger Straße are two bus stops which connect you perfectly to the ÖPNV (local transportation system). The shopping center Glacis Galerie with its over 90 shops and restaurants is only in 800 metres distance.

At a glance

Completion: 2018

Apartments: 260

Appartmen



1 elevator per house



inkl. WLAN



bis zu 25 Mbit/s Download – 5 Mbit/s Upload



Bicycle stand



fitness studio



4 Charging Stations



Garden Campus



Lounge



Bar



Washing Room



Wi-Fi in every room



Bus Stop in the immediate neigh



Central station within walking distance (5 min.)



6 seminar rooms



Locker room

The campus. The location Neu-Ulm.

Neu-Ulm is a young city - founded only in 1811, it owes its emergence to the upheavals following the Napoleonic Wars. Ulm, which was almost 1,000 years older, became part of Württemberg at that time, while the settlements on the right bank of the Danube remained with Bavaria. Today, Neu-Ulm and Ulm form a transnational dual center with a total population of around 180,000.

The Neu-Ulm University of Applied Sciences (HNU) was founded in 1994 as a branch of the Kempten University of Applied Sciences. It has been independent since October 1998. For the 2020/21 winter semester, HNU reported a record with more than 4,0001 students enrolled for the first time - and the trend continues to rise, which is why an extension building was already constructed in 2018. The University of Ulm, founded in 1967, is the youngest university in Baden-Württemberg with more than 10,0001 enrolled students. Ulm is also home to the Ulm University of Applied Sciences with around 4,0001 students. In total, therefore, there are around 18,000¹ students enrolled in the region.

The University of Ulm, founded in 1967, is the youngest university in Baden-Württemberg with over 10,0001 enrolled students. Ulm is also home to the Ulm University of Applied Sciences with around 4,0001 students. In total, therefore, there are around 18,0001 students enrolled in the region.

¹ Values are based on official information from the colleges and universities of Ulm/Neu-Ulm.



en[Jetzt Memminger Str. 33-37 besuchen!]

Uni Apart Neu-Ulm

Komfort TBF

649en[- €/mtl. inkl. Nebenkosten-Flatrate]

en[ca. 37,0 m²]

Furniture

Every apartment is well-thought-out and ready furnished. This way you can start your semester without a stressful move and be able to directly start with full power into your studies.

Information: The apartment type Komfort TBF is barrier-free. Possibility for double occupancy (additionally cost €100,-/ month)

- fully equipped kitchenette with granite countertop, LED-Lighting and well known brands for integrated kitchen equipment such as AEG (2 Ceran-hobs, Oven and Refrigerator with freezing compartment)
- generous, barrier-free Bathroom including washbasin, shower, toilet and heating element for towels
- dining table with 2 chairs
- Queensize Bed (160 x 200 cm)
- spacious cupboard and commodes
- additional commode
- comfortable Loungearea with couch and armchair
- large writing desk with office chair and reading lamp
- wall lamp
- room-high windows for a perfect light in the apartment
- Interior shading for a maximum of privacy
- electrically operated external blinds for individual regulation of light incidence
- Broadband-LAN with WLAN within every Apartment and all community areas (including up to 12 MBit/s; you can book individually up to: 25 MBit/s additionally €9,90 per month, 50 MBit/s additionally €14,90 per month or 100 MBit/s additionally €19,90 per month)
- own terrace with garden access

(Modifications of furniture with the usual reserve)

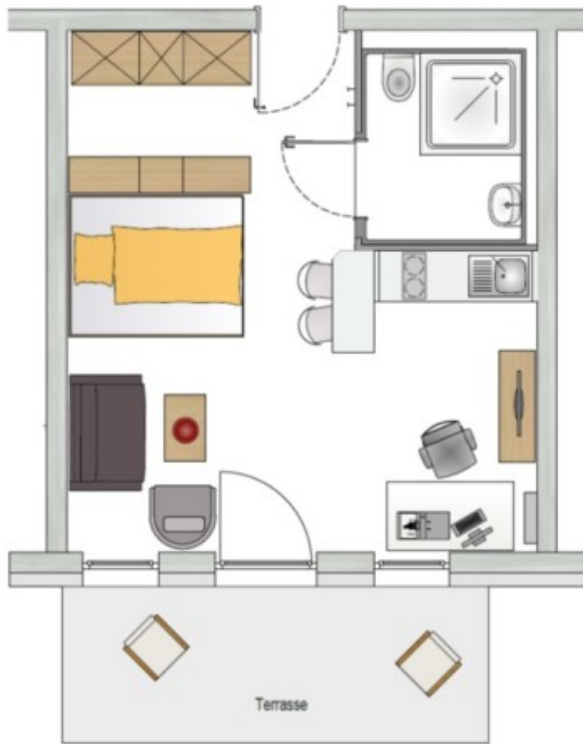
Minimum rental

12 en[Monate]



en[Jetzt Komfort TBF besuchen!]

en[Grundriss]



Pictures

