

Uni Apart Neu-Ulm  
Das grüne Haus<sup>®</sup> am  
Ring,  
Steubenstraße 2

---



Steubenstraße 2  
89231 Neu-Ulm  
Deutschland

# Real credits. The furniture.

---

## Construction Site Update 22

### The apartments.

The property has a total of 257 fully furnished student apartments and various apartment types. With apartment sizes ranging from approx. 17 m<sup>2</sup> to approx. 49 m<sup>2</sup>, there is a suitable offer for every student. The apartments can be rented by 1 to 2 residents.

### The parking facilities

One of the 190 parking spaces can be rented in the building's own underground garage. 6 parking spaces are each equipped with a charging option for e-vehicles..

### The community areas.

The apartments are exclusively reserved for students, interns, postgraduates, trainees, apprentices and others who are in training - this ensures a strong community and real student life.

### The house.

The entire facility is subject to a well thought-out energy-saving concept that extends to the smallest details. The central technical facility management coordinates residents' inquiries and takes care of repair and maintenance tasks on site. In addition, the administration has an office in the property and is thus available to the residents at regular office hours to provide advice and assistance.

### Residents.

The apartments are exclusively reserved for students, interns, postgraduates, trainees, apprentices and others who are in training - this ensures a strong community and real student life.

### Location.

The central location on the Allgäuer Ring with a bus stop directly in front of the door and direct connection to the university and the colleges in Ulm and Neu-Ulm make the regular use of a car almost unnecessary. Ulm's Münster can be reached after only about 2 kilometers and Neu-Ulm University is also only about 1.5 kilometers away from the student apartment house. The distance to the University of Ulm is about 6 kilometers. The Glacis-Galerie and the Petrusplatz in Neu-Ulm are just 500 meters away. All stores for daily needs such as supermarkets etc. are located in the immediate vicinity. The nearest bakery is literally just a stone's throw away: this is located on the first floor of the complex.

## At a glance

Completion: 2023

Apartments: 257

Appartment size: Ø 26m<sup>2</sup>



Wi-Fi in every room



Central station within walking distance (5 min.)



Lounge



Eventküche



3 seminar rooms



1 elevator per house



Bicycle stand



6 Elektroladestationen



Bus Stop right outside the door



fitness studio



Bar



Gaming-Room



Washing Room



Garden Campus



Locker room

# The campus. The location Neu-Ulm.

---

Neu-Ulm is a young city - founded only in 1811, it owes its emergence to the upheavals following the Napoleonic Wars. Ulm, which was almost 1,000 years older, became part of Württemberg at that time, while the settlements on the right bank of the Danube remained with Bavaria. Today, Neu-Ulm and Ulm form a transnational dual center with a total population of around 180,000.

The Neu-Ulm University of Applied Sciences (HNU) was founded in 1994 as a branch of the Kempten University of Applied Sciences. It has been independent since October 1998. For the 2020/21 winter semester, HNU reported a record with more than 4,0001 students enrolled for the first time - and the trend continues to rise, which is why an extension building was already constructed in 2018. The University of Ulm, founded in 1967, is the youngest university in Baden-Württemberg with more than 10,0001 enrolled students. Ulm is also home to the Ulm University of Applied Sciences with around 4,0001 students. In total, therefore, there are around 18,000<sup>1</sup> students enrolled in the region.

The University of Ulm, founded in 1967, is the youngest university in Baden-Württemberg with over 10,0001 enrolled students. Ulm is also home to the Ulm University of Applied Sciences with around 4,0001 students. In total, therefore, there are around 18,0001 students enrolled in the region.

<sup>1</sup> Values are based on official information from the colleges and universities of Ulm/Neu-Ulm.



en[Jetzt Das grüne Haus<sup>®</sup> am Ring,  
Steubenstraße 2 besuchen!]

# Uni Apart Neu-Ulm

## 2-Zimmer Business Suite #clubhaus

---

895en[,- €/mtl. inkl. Nebenkosten-Flatrate]

en[ca. 36,0 m<sup>2</sup>]

### Furniture

---

The business flats are cosy, modern and attractively furnished. All flats have double beds and are therefore suitable for occupancy by 1 or 2 people. Note: Possibility of double occupancy (additional charge of €100/month)

- Bathroom with washbasin, shower, toilet and radiator as towel dryer
- Fully equipped kitchenette with brand-name built-in appliances (2 hobs, oven and fridge with freezer compartment)
- Three-door wardrobe
- Bed (160x200 cm)
- Bedside cabinets
- lowboard
- Desk
- Desk chair
- Dining table with four chairs
- Wardrobe with mirror
- Couch

(furnishings subject to change)

### Minimum rental

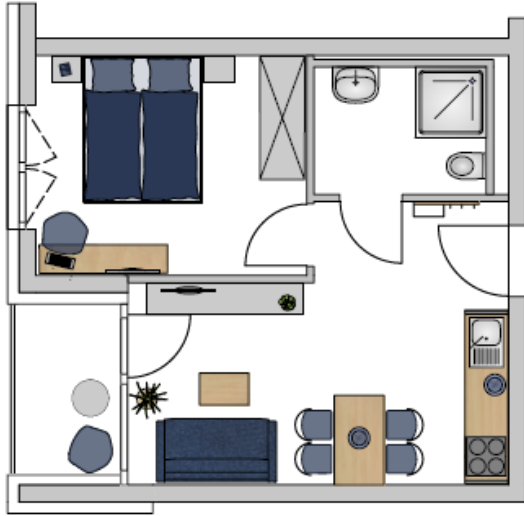
---

12 en[Monate]



en[Jetzt 2-Zimmer Business Suite #clubhaus besuchen!]

## en[Grundriss]



## Pictures