

# Uni Apart Munich

## Zwillingstr. 4

---



Außenansicht



Fitnessstudio



Lounge



Gemeinschaftsraum

 **Uni Apart**

Zwillingstraße 4  
80807 München  
Deutschland

# Real credits. The furniture.

---

## The apartments.

The property has a total of 116 fully furnished student apartments and a wide variety of apartment types: With seven different types ranging from Studio-S (21m<sup>2</sup>) to Sky-Suite (43 m<sup>2</sup> plus roof terrace), there is a suitable offer for every student.

## The community areas.

For getting to know each other, relaxing and communicating: Uni Apart Lounge with bar, three seminar rooms in the house, gym and yoga room, laundry, drying and ironing rooms as well as lobby and a spacious garden.

## The house.

The entire student apartment building is subject to a well thought-out energy-saving concept that extends to the smallest details, such as energy-saving light bulbs. The central technical property management coordinates residents' requests and takes care of repair and maintenance tasks on site. Janitors as well as all cleaning staff and administrative employees are employed directly by Uni Apart. So you don't have to rely on outside companies for these things - a real quality feature. Parking spaces (above ground, lockable duplex parking spaces as well as lockable garages) can be rented.

[Energieausweis: Uni Apart Zwillingstraße München \(pdf\)](#)

## Residents.

The apartments are exclusively reserved for students, interns, postgraduates, trainees, apprentices and others who are in training - this ensures a strong community and real student life.

## Location.

The Uni Apart student apartment house Munich Zwillingstraße is peacefully located in the beautiful Milbertshofen centered between Mittlerer Ring and Frankfurter Ring. Many shopping facilities and restaurants can be found in the immediate vicinity. The Olympia shopping center is only three subway stations away and can be reached by car in about five minutes. One subway stop is about a five-minute walk away, and another is about a ten-minute walk away. So there is an optimal connection to the public transport. Shopping facilities for daily needs can be reached easily on foot..

## At a glance

Completion: 2010

Apartments: 116

Room size: Ø 29m<sup>2</sup>



3 seminar rooms



fitness studio and yoga room



Romantic Garden with Fountains and Seating Areas



Maintenance Man In-House



inkl. WLAN



min. 50 Mbit/s Download – 10 Mbit/s Upload



Lounge



Bar



Washing room



Basement with Bicycle Racks



Locker room

# The campus. The location Munich.

---

Munich is the capital of the Free State of Bavaria. With a population of around 1.5 million, it is the most populous city in Bavaria. More than 2.7 million people live in the Munich metropolitan area. In the 2014 city rankings of the consulting firm Mercer, Munich ranked second among 50 major cities worldwide in terms of infrastructure and fourth in terms of quality of life. Within Germany, Munich is considered the most livable city.

Munich is home to numerous national and international authorities as well as important universities and colleges, including Ludwigs-Maximilian University (LMU) and the Technical University (TUM), to name just two. Both have received special funding since 2007 as informally so-called elite universities under the Excellence Initiative.

Other educational institutions include the Munich University of Applied Sciences (an amalgamation of seven engineering schools and higher technical colleges), the Academy of Politics, the Academy of Fine Arts, the Academy of Music and Theater, the Bavarian Theater Academy, the Academy of Film and Television, and numerous private and church sponsors. In total, almost 120,000 people study in Munich.



en[Jetzt Zwillingstr. 4 besuchen!]

# Uni Apart Munich

## Sky Studio L

---

810en[,- €/mtl. inkl. Nebenkosten-Flatrate]

en[ca. 32,0 m<sup>2</sup>]

## Furniture

---

Bathroom with sink, shower, toilet and heater as towel dryer

high-quality built-in kitchen with high-brand equipment (2 cooktops, oven and refrigerator with freezing department)

Diningtable with 2 chairs

Bed (140 x 200 cm)

Cupboard

Commode

Loungecorner with couch

Desk with chair

Roof deck

Internet access and tv-cable-signal inclusive

(Changes of furntire under usual reserve)

## Minimum rental

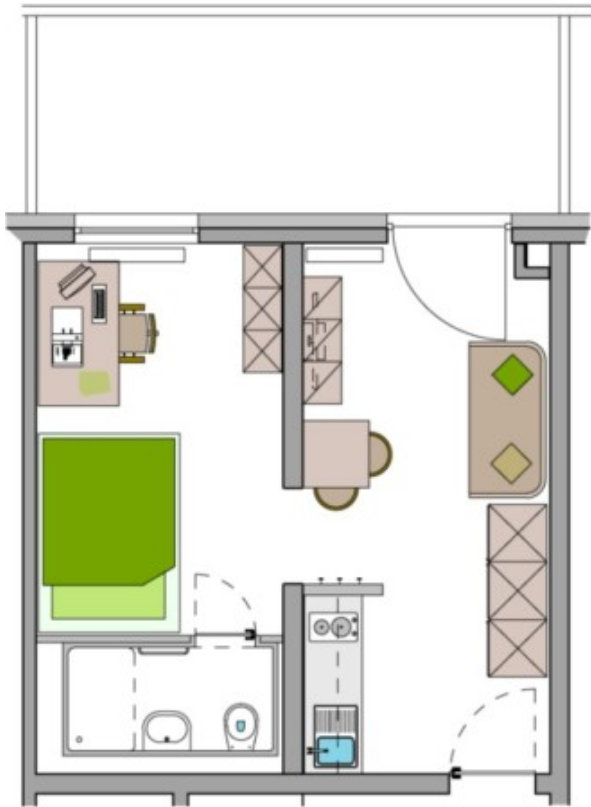
---

12 en[Monate]



en[Jetzt Sky Studio L besuchen!]

## en[Grundriss]



## Pictures